



# Monthly Operating Report

June:2024

So. Sangamon  
Water Commission  
July 15th, 2024

## SSWC

9199 Buckhart Rd Rochester IL 62563

# TABLE OF CONTENTS

SECTION	PAGE NO.
<b>Executive Summary.....</b>	<b>ES-1</b>
<b>1. SAFETY .....</b>	<b>1-1</b>
1.1 Safety Training .....	1-1
1.2 Lost time Accidents .....	1-1
1.3 Safety Audit .....	1-1
1.4 Miscellaneous Safety.....	1-1
<b>2. COMPLIANCE, FLOWS AND LOADINGS .....</b>	<b>2-2</b>
2.1 Compliance .....	2-2
2.2 Influent flows and loadings .....	2-2
2.3 Effluent Concentrations .....	2-2
2.4 Lagoon Discharge Concentrations .....	2-4
<b>3. OPERATIONS.....</b>	<b>3-1</b>
3.1 Events impacting operations .....	3-1
3.2 Emergency & Service calls.....	3-1
3.3 Emergency Call-outs .....	3-1
3.4 Customer Inquiries .....	3-1
<b>4. MAINTENANCE AND REPAIR.....</b>	<b>4-9</b>
4.1 Preventative and predictive maintenance.....	4-9
4.2 Corrective repairs .....	4-9
<b>5. PROJECT MANAGEMENT &amp; SUPPORT .....</b>	<b>5-1</b>
5.1 Staffing & Training.....	5-1
5.2 Corporate Support.....	5-2
5.3 Budget.....	5-3
<b>6. CAPITAL PLANNING .....</b>	<b>6-1</b>
6.1 Approved CIP Projects Current status.....	6-1
6.2 Draft Capital Improvement Plan .....	6-1



## LIST OF TABLES

<b>TABLE</b>	<b>PAGE NO.</b>
Table 2.2 Influent Concentrations and Flow.....	2-2
Table 2.3 Finished Water Quality.....	2-2
Table 2.4 Weekly Grab Sample Analysis Results.....	2-4
Table 4.1 Budget Table.....	5-3

## EXECUTIVE SUMMARY

**Safety.** Safety is the number one priority at South Sangamon. We have instituted a monthly safety meeting for operations staff at the plant. There were no lost time accidents in the month of June 2024.

**Compliance.** The finished water quality was within regulatory limits and all reporting and sampling requirements were met for the month. A copy of the Operations Report submitted to the Illinois Environmental Protection Agency is available at [www.sswc.us](http://www.sswc.us)

During the month of June 2024, the plant pumped 51.356 million gallons from the well field and 45.526 million gallons of finished water. This is 15.3 million gallons more than June 2023.

The SSWC plant has been removed from Critical Review status.

**Operations.** There was 1 emergency call-outs for the month. There were numerous customer inquiry for the month.

**Maintenance and Repair.** For the month of June 2024, there were 30 inspections, 3 preventative and multiple corrective maintenance activity completed. There was 2 repair activities performed .

**Budget.** Passed at May 20<sup>th</sup> 2024 meeting.

### Capital Planning.

Chatham emergency interconnect

Onsite fuel storage tanks

Detention Tank

Well#11

# 1. SAFETY

## 1.1 SAFETY TRAINING

At South Sangamon we strive to provide a safe working environment for all employees. This is accomplished with daily safety meetings and open communication.

## 1.2 LOST TIME ACCIDENTS

There were 0 lost time accidents in the month of June 2024.

## 1.3 SAFETY AUDIT

No safety audits to date.

## 1.4 MISCELLANEOUS SAFETY

No notable safety issues

## 2. COMPLIANCE, FLOWS AND LOADINGS

### 2.1 COMPLIANCE

The finished water quality was within regulatory limits and all Bacteriological testing was completed for the month of June. A copy of the Operations Report to the Illinois Environmental Protection Agency (IEPA) is available on the SSWC website.

### 2.2 INFLUENT FLOWS AND LOADINGS

The total gallons pumped from the well field were 51.356 MG. The influent parameters were all within the normal range.

The influent flow and loadings are summarized below in Table 2.2

<b>Table 2.2 Influent Concentrations and Flow</b>								
	pH	Temp	Iron	Manganese	Fluoride	Hardness	Alkalinity	Well Flow Gals (MGD).
<b>Max.</b>	7.2	19.8	5.31	.272	-	365	322	2.038
<b>Min.</b>	6.7	14.0	.37	.131	-	350	300	1.244
<b>Avg.</b>	6.96	15.2	1.16	.174	-	357	305	1.712
<b>Total</b>	-	-	-	-	-	-	-	51.356

### 2.3 EFFLUENT CONCENTRATIONS

The facility filtered 45.526 MG during the month with a daily average of 1.518 MG and a min/max 1.196/ 1.821 MG.

<b>Table 2.3 Finished Water Quality</b>										
	Free CL2	Total CL2	pH	Temp	Iron	Manganese	Fluoride	Hardness	Alkalinity	Phosphate
<b>Max.</b>	0.16	4.02	7.6		0.03	0.021	1.09	120	310	3.09
<b>Min.</b>	0.01	3.00	7.0		0.02	0.001	0.35	100	280	1.51
<b>Avg.</b>	0.09	3.5	7.4		0.02	0.011	0.78	106	301	1.83
<b>MCL</b>	-	-	-	-	1.00	-	4.00	-	-	-
<b>SMCL</b>	-	-	-	-	0.30	0.050	2.00	-	-	-

## Finished Water Flow Comparison for FY 2023-24

Time Period	23-24	22-23	21-22
July 2023- June 2024	418,058,521	414,540,554	422,012,750
Increase for the same period last year		3.52 MG	-7.47 MG

FINISHED WATER PUMPING HISTORY						
	2023-24	2022-23	2021-22	2020-21	2019-20	2018-19
July	41,565,811	38,861,790	39,001,640	44,237,066	23,742,374	41,178,722
Aug	39,770,720	36,977,913	39,953,900	39,638,063	25,018,633	35,176,238
Sept	38,677,420	32,355,302	38,935,839	38,674,095	34,234,782	34,754,000
Oct	32,733,224	29,576,287	34,918,955	34,597,739	30,769,238	30,353,482
Nov	30,061,570	35,563,717	31,181,005	32,325,040	30,877,400	30,464,000
Dec	31,818,986	30,450,255	31,391,459	31,582,311	29,703,954	31,930,000
Jan	33,807,516	37,721,005	32,322,270	31,456,987	30,073,516	28,823,375
Feb	29,777,768	33,481,076	32,451,653	30,638,842	28,797,693	28,625,431
Mar	31,222,925	36,781,261	33,909,417	33,633,244	30,339,298	31,237,000
Apr	31,707,537	36,832,617	31,991,050	33,214,211	31,542,650	28,418,249
May	36,629,959	43,484,155	37,459,417	35,932,776	34,673,848	33,045,927
June	40,285,085	22,455,176	38,496,145	37,616,256	17,414,377	33,460,303
	-----	-----	-----	-----	-----	-----
Totals	418,058,521	414,540,554	422,012,750	423,546,630	347,187,763	387,466,727
Avg	1.14 MGD	1.14 MGD	1.16 MGD	1.16 MGD	.949 MGD	1.06 MGD



## 2.4 LAGOON DISCHARGE CONCENTRATIONS

The results for the NPDES lagoon discharge permit are summarized below.

**Table 2.4 Weekly Grab Sample Analysis Results**

<b>Lagoon Effluent Results</b>						
<b>Date</b>	<b>Fe (mg/l)</b>	<b>Mn (mg/l)</b>	<b>Chloride (mg/l)</b>	<b>Cl<sup>2</sup> (mg/l)</b>	<b>pH (S.U.)</b>	<b>TSS (mg/l)</b>
June 11th, 2024						
Minimum	.06	.096	347.2	.01	7.5	<4
Maximum	.06	.096	347.2	.01	7.5	<4
Average	.06	.096	347.2	.01	7.5	<4
<b>Monthly Avg Limit</b>	<b>2.000</b>	<b>1.000</b>				<b>15</b>
<b>Daily Limit</b>	<b>4.000</b>	<b>2.000</b>	<b>500</b>	<b>0.05</b>	<b>6.0-9.0</b>	<b>30</b>

The Chloride sample for the month, performed by the Springfield Metropolitan Sanitary District, was below 30,000 mg/l for the month of June 2024. The limit for chloride discharge to the sanitary district is 30,000 mg/L.

## 3. OPERATIONS

### 3.1 EVENTS IMPACTING OPERATIONS

**There were over 50 incident that impacted the operation of the plant.**

Ion exchange alarm

Westech filters comm loss

Power surge

Power Sag

Power Outages

Ion Exchange Brine Pump

Well Comm loss

### 3.2 EMERGENCY & SERVICE CALLS

#### Service Calls:

- There was 0 emergency call out for the month.

### 3.3 EMERGENCY CALL-OUTS

There was 1 emergency call out for the month.

### 3.4 CUSTOMER INQUIRIE

There were numerous customer inquiries.

#### **OTHER WORK PERFORMED**

Inspected distribution mains

Inspected booster station

Customer service

Air Compressor Mounting Platform

SCADA programming

Mower Maintenance

New scada computers

Interconnect Start Up

Well Transducer installation

Train #3 Repair

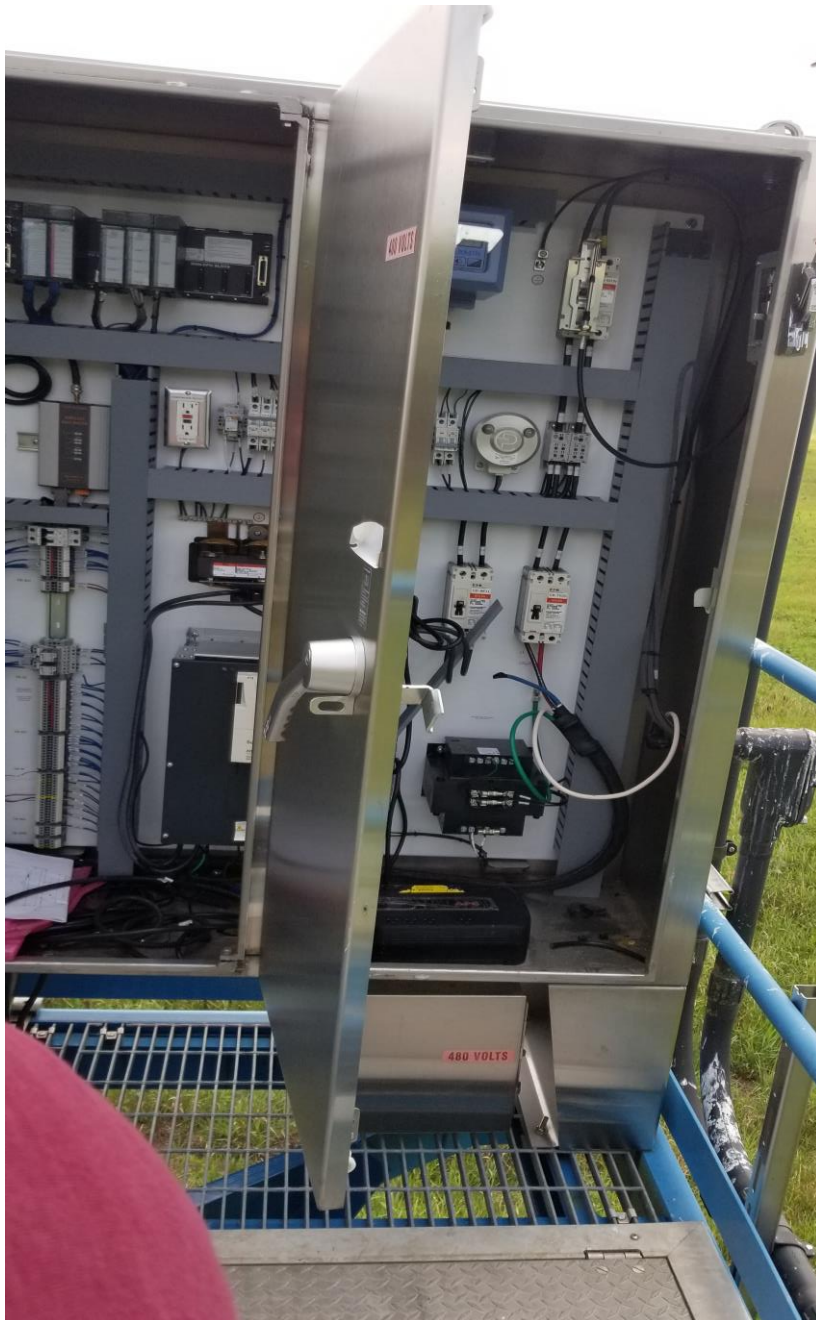
Well #5 reset

LCRR site plan

Source Water Protection Plan



We received a comm loss alarm from well #5 in the evening. Upon inspection it was found the battery had not charged properly and had to be reset.



When the panel was opened it was found to be extremely hot inside.



Upon closer inspection it was found the cooler has failed. Steps are being taken to remedy the issue.







SSWC, Petersburg Plumbing, scadaWARE and Benton and Associates attempted the start up procedure for the new interconnect again. The last time a startup was attempted was the first time power was put to the valve so debugging was required. This attempt at startup we were actually able to actuate the valve and move water. Startup was not completed due to pressure sensors that came from the factory defective.



South Sangamon had an inquiry about the possibility of providing water to a residence on Country Trail south of Rochester off of Cardinal Hill Rd.





## **4. MAINTENANCE AND REPAIR**

### **4.1 PREVENTATIVE AND PREDICTIVE MAINTENANCE**

For the month of June 2024, there were 30 inspections, 3 preventative and multiple corrective maintenance activities completed.

### **4.2 CORRECTIVE REPAIR AND MAINTENANCE**

Pulling and cleaning pre filters on all 3 filter trains on weekly basis

CIP train 1,2 and 3

Purged air control system

Air Compressor service

Raw water line flushing

Detention tank flush

Flushing Air Lines

Maintenance of New Berlin Booster Station

Meter Transmitter Replacement

Air compressor Maintenance

Pneumatic Tank Maintenance

Train #3 Repair

Transducer Install

Tractor Warranty Repair Delivery



## 5. PROJECT MANAGEMENT & SUPPORT

### 5.1 STAFFING & TRAINING

- Staff member training has been continuous and ongoing.
- Operator and Asst. Operator have been studying for EPA licensing test.

### 5.2 OPERATIONAL SUPPORT

The following individuals, either on-site or remotely, provided assistance in operation and/or maintenance of the plant during the month of June 2024.

- Kevin Canham
- Stephen Bivin
- Katie Krall
- Dan (SCADAware)
- Joe Lee Electric
- Kevin Garmin (SCADAware)



## 5.3 BUDGET

Table 5.3 Operating Budget

### Table 5.3 Budget Table

Budget Table was removed: see clerks report

## **6. CAPITAL PLANNING**

### **6.1 APPROVED CIP PROJECTS CURRENT STATUS**

Pigging project construction complete. Awaiting first pigging before completely releasing contractor.

The Chatham /South Sangamon emergency interconnect construction is mostly complete. The valve has arrived and has been installed. Multiple startups have been attempted. Due to various issues start up has not been completed. A new startup date is being planned.

Meter Project progressing, All meter bases and registers are on site. 31 cell meters have been installed.

Meco Engineering has provided us with initial plans for well #11. Well #11 construction permit has been approved and has been received at the plant. Flood Plain Permit has been received and is posted. MECO Engineering has been on site and sample wells have been drilled.

### **6.2 DRAFT CAPITAL IMPROVEMENT PLAN**

The CIP is a planning document that includes all projects anticipated to exceed \$5,000 in cost over the next five years. The CIP is an ongoing process and will be refined from time to time as projects are completed and new issues are identified.

1. Onsite fuel storage tanks have arrived on site and pumps have been installed-completed
2. BOP CPU upgrade has been completed
3. Second raw water detention tank
4. SSWC/Chatham interconnect
5. Well #11







